

Buikletsels

Jan Biert

Chirurg Traumatoloog

UMC St Radboud

Definitie

Stomp letsel

Penetrerend letsel

Trauma mechanisme

Blunt

- ◆ Spleen, liver, and hollow viscus
- ◆ Compression
- ◆ Crushing
- ◆ Shearing
- ◆ Deceleration (fixed organs)

Trauma mechanisme

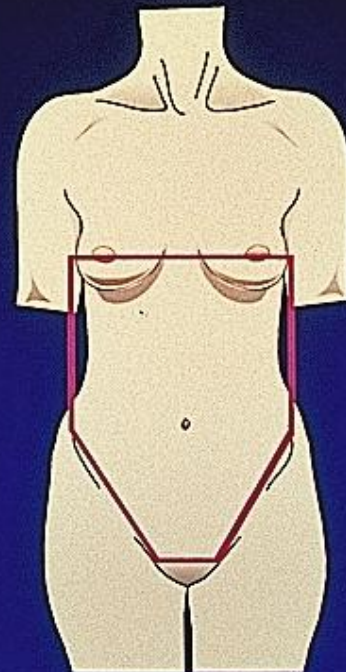
Penetrating

- ◆ Liver, small bowel, and colon
- ◆ Laceration / low energy
- ◆ Kinetic energy / high energy

Anatomie

External

- ◆ Anterior abdomen
- ◆ Flank
- ◆ Back



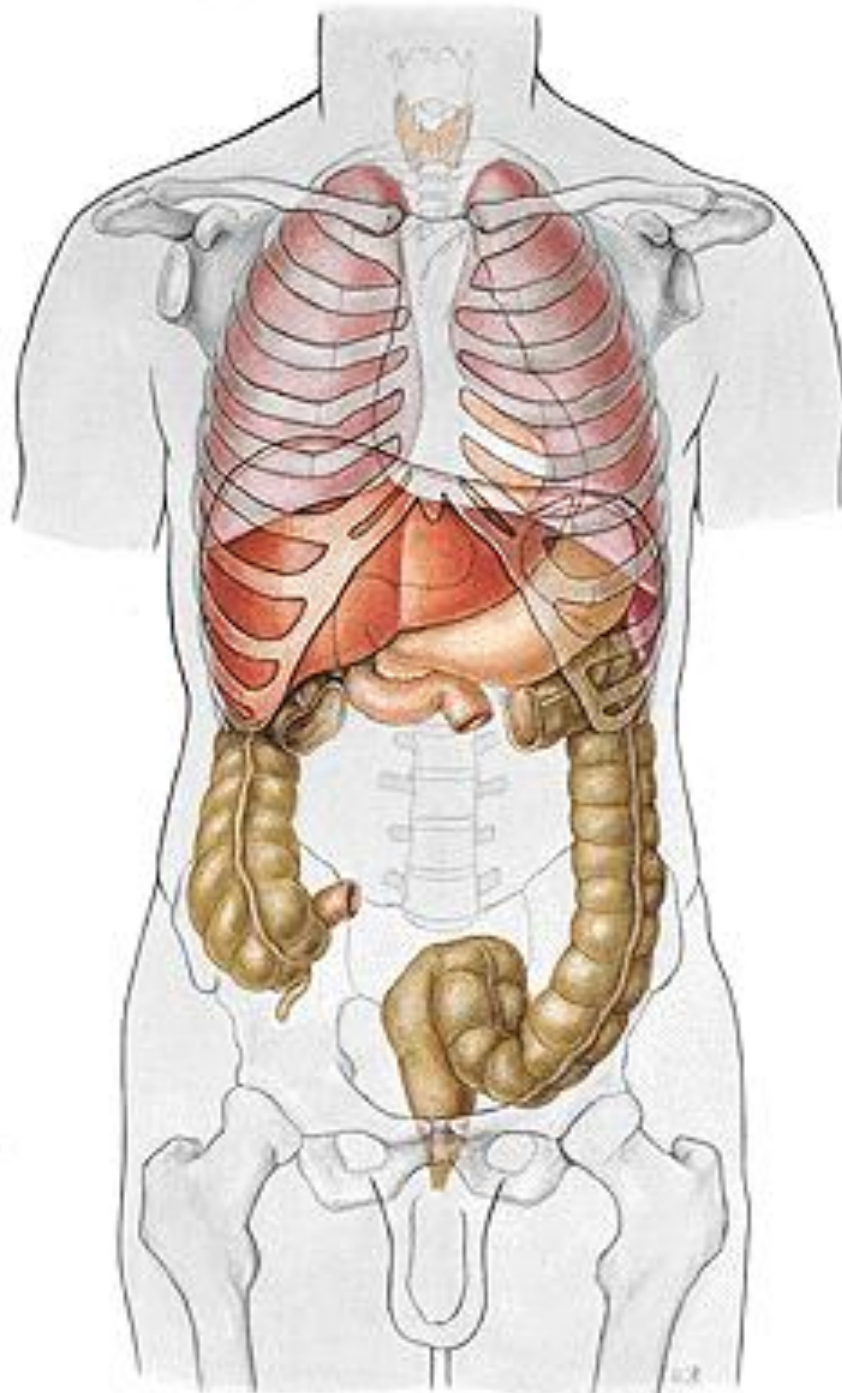
Anatomie

Internal

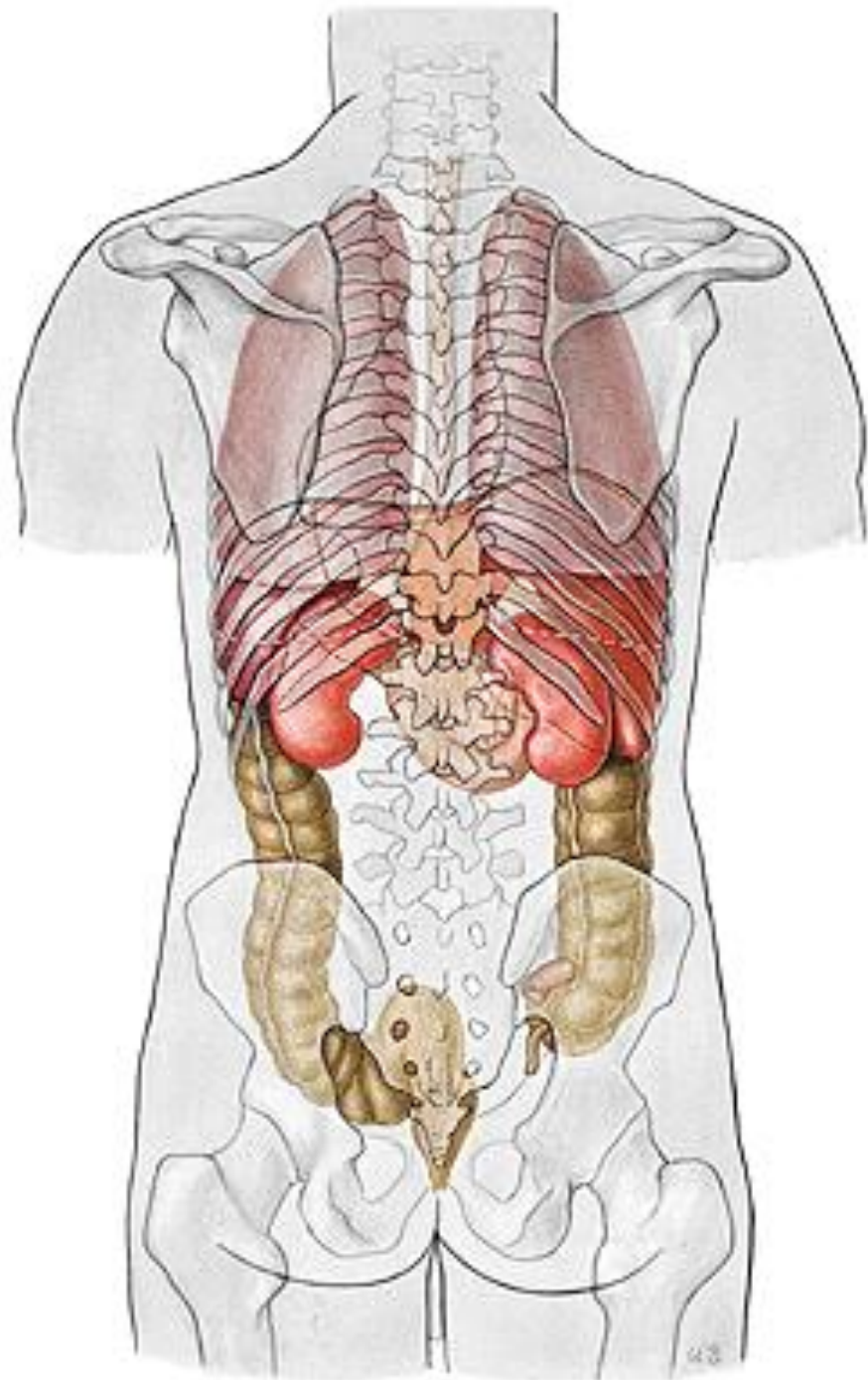
- ◆ Peritoneal cavity
- ◆ Retroperitoneal space
- ◆ Pelvis



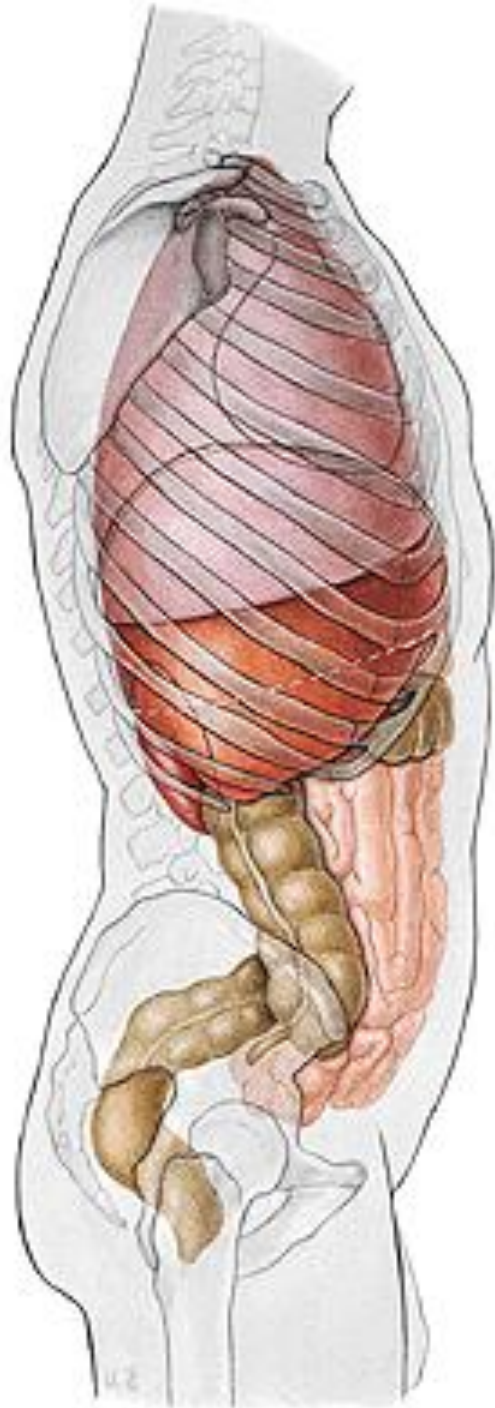
Anatomie



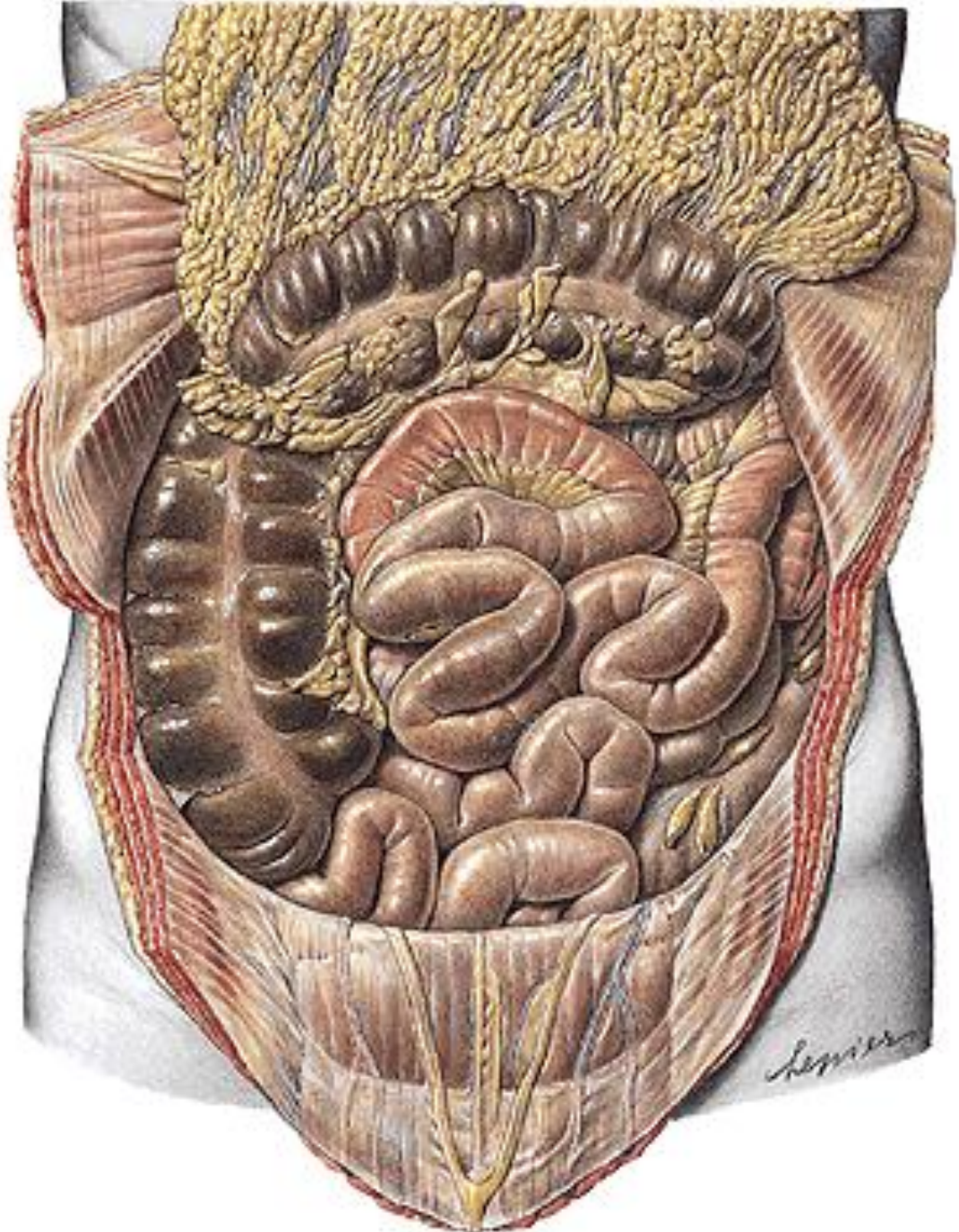
Anatomie



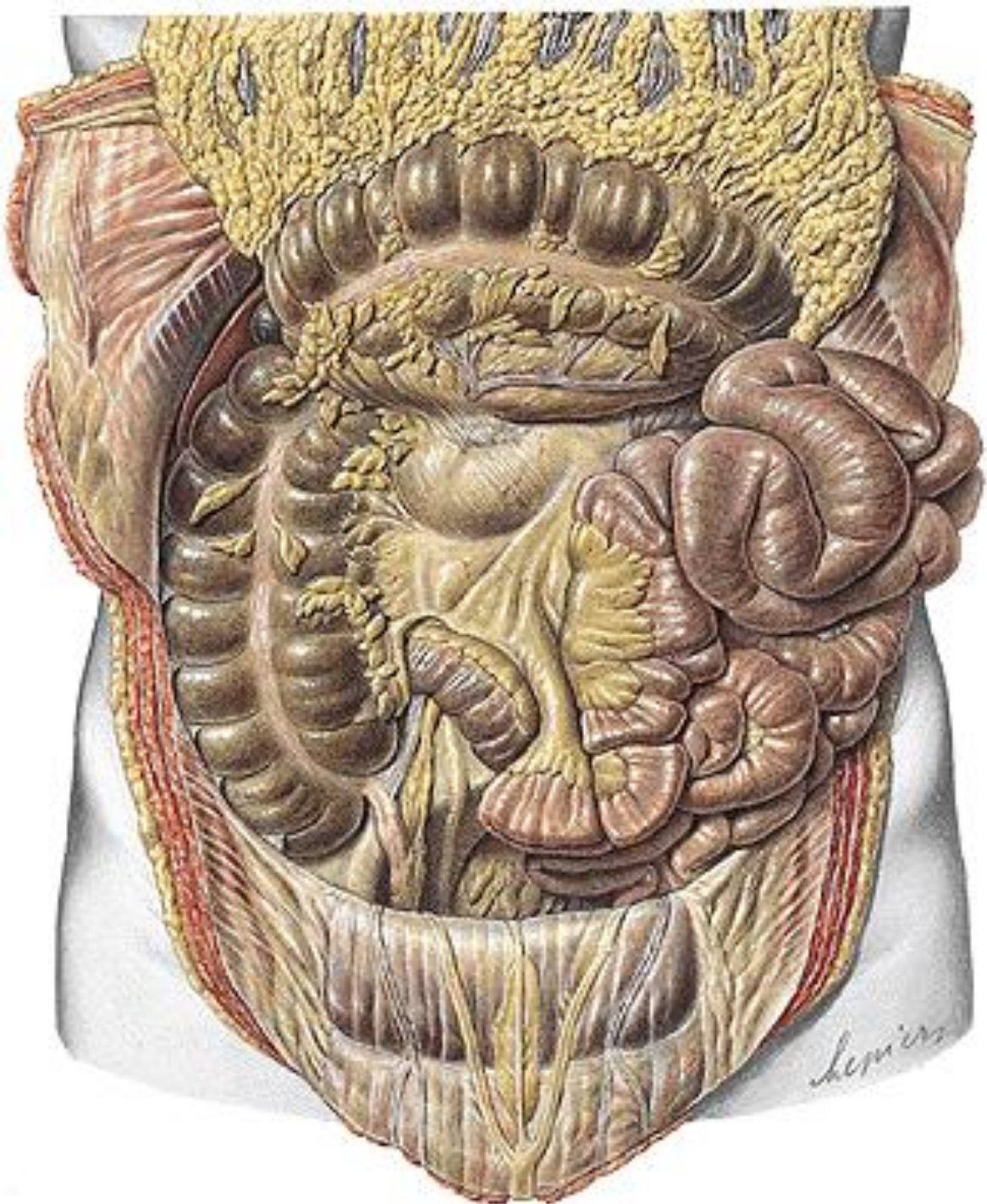
Anatomie



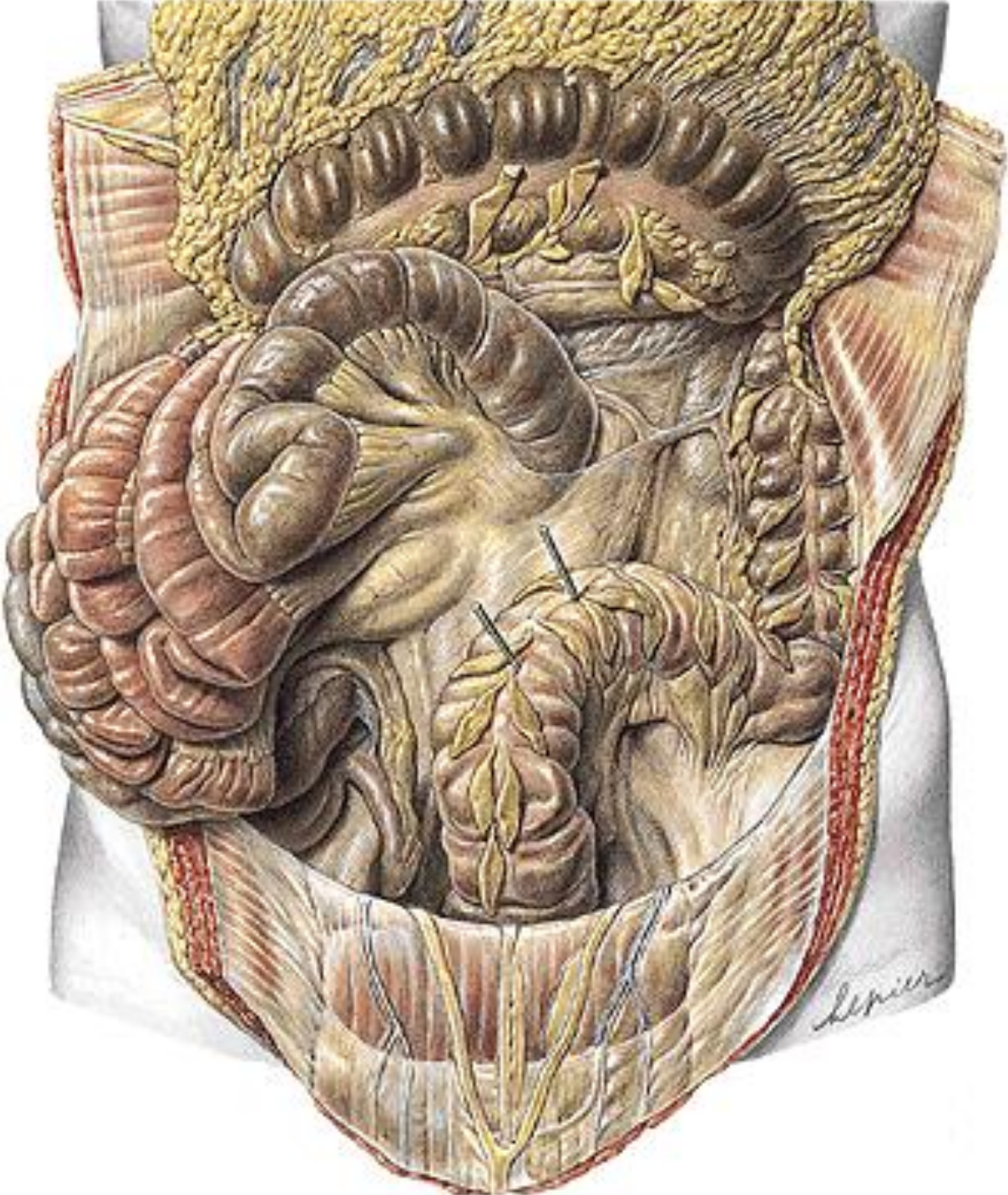
Anatomie



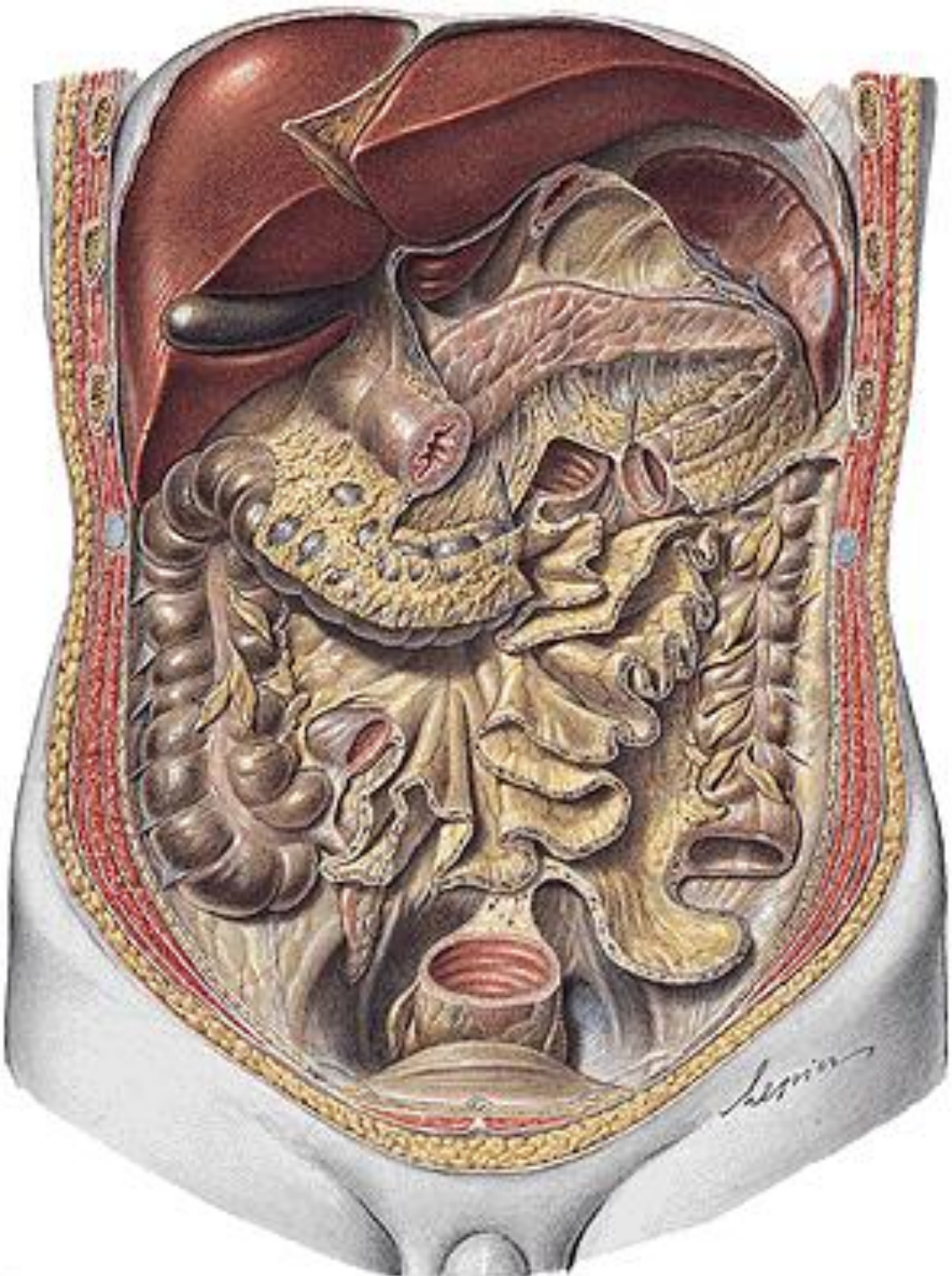
Anatomie



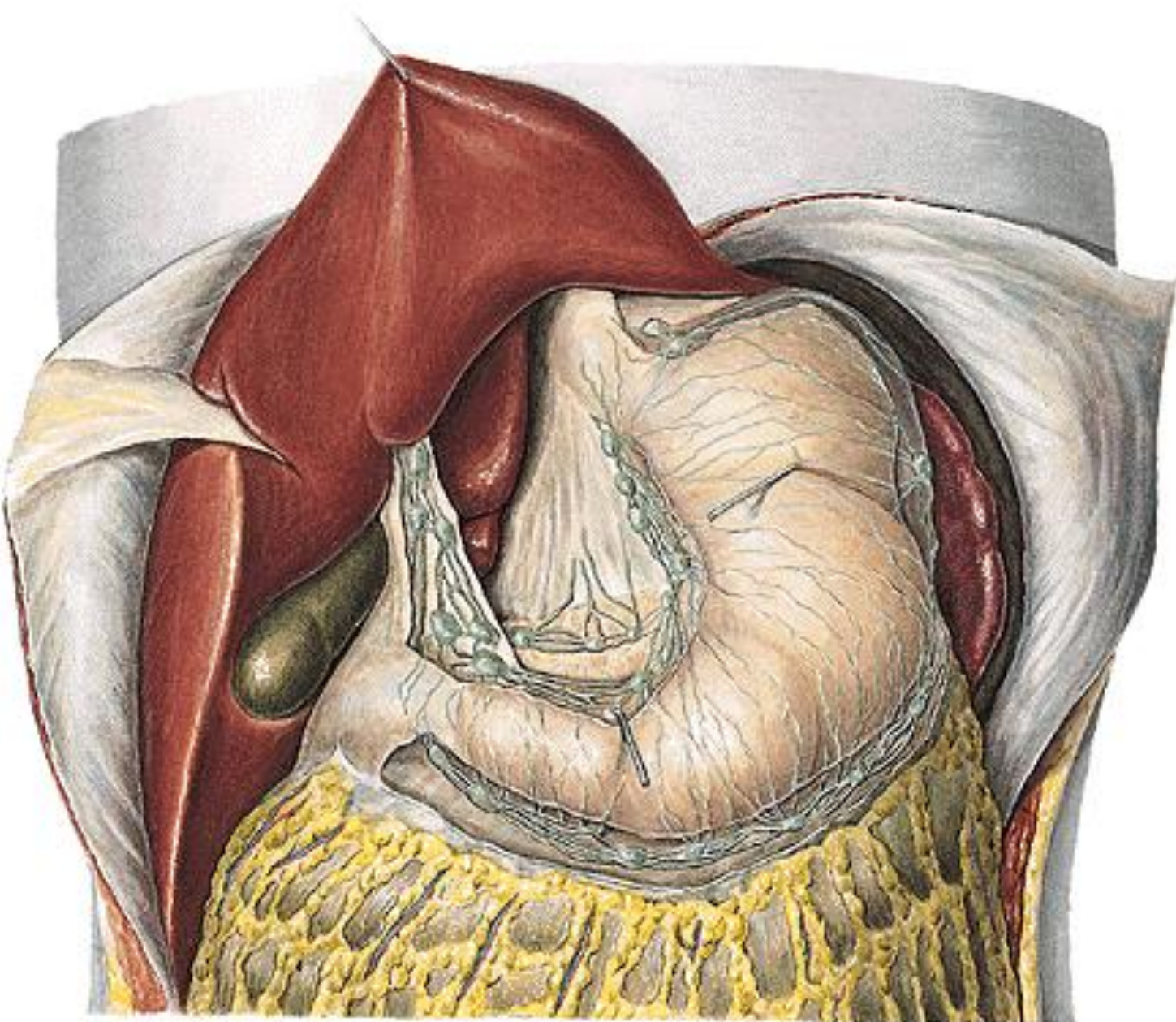
Anatomie



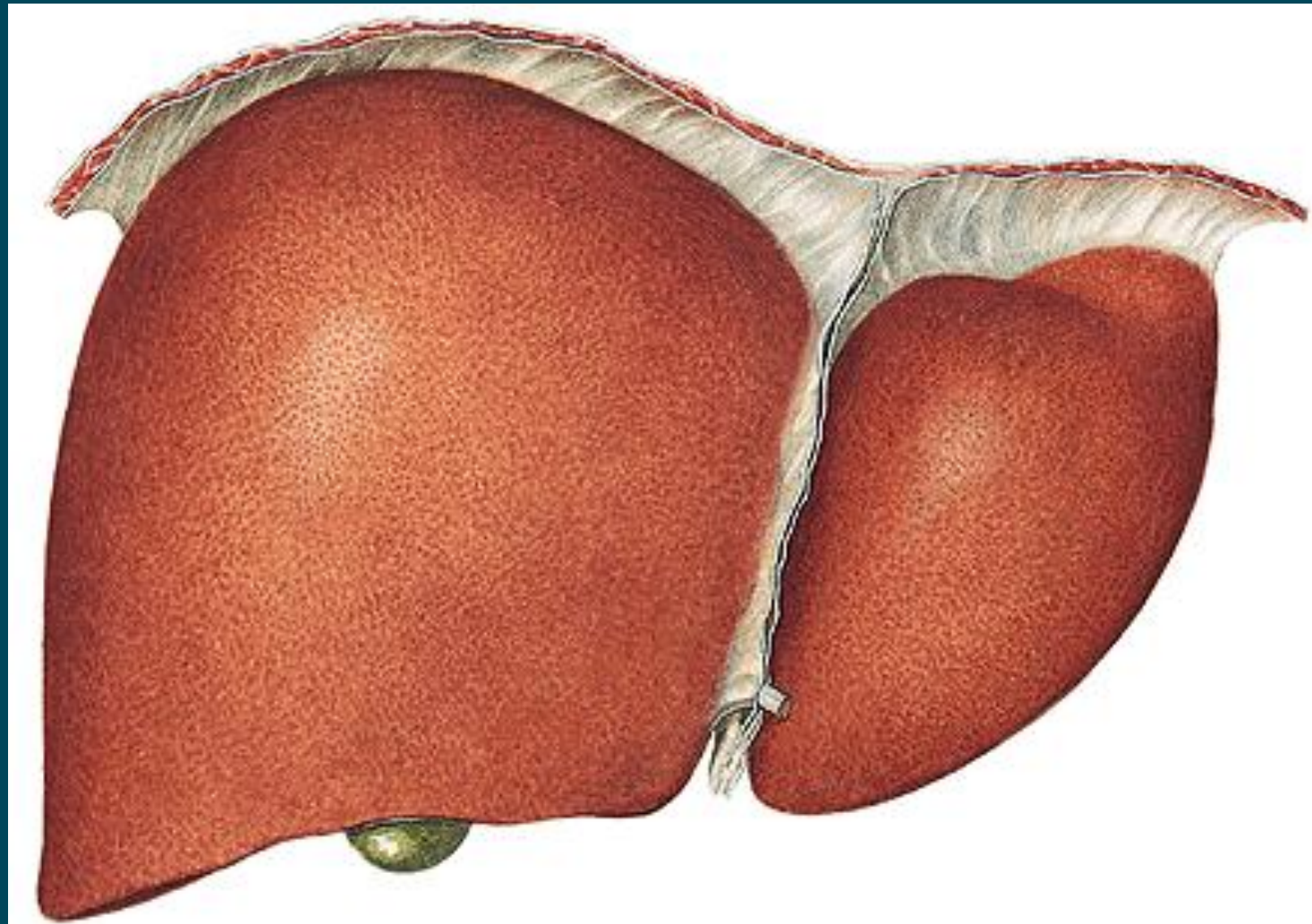
Anatomie



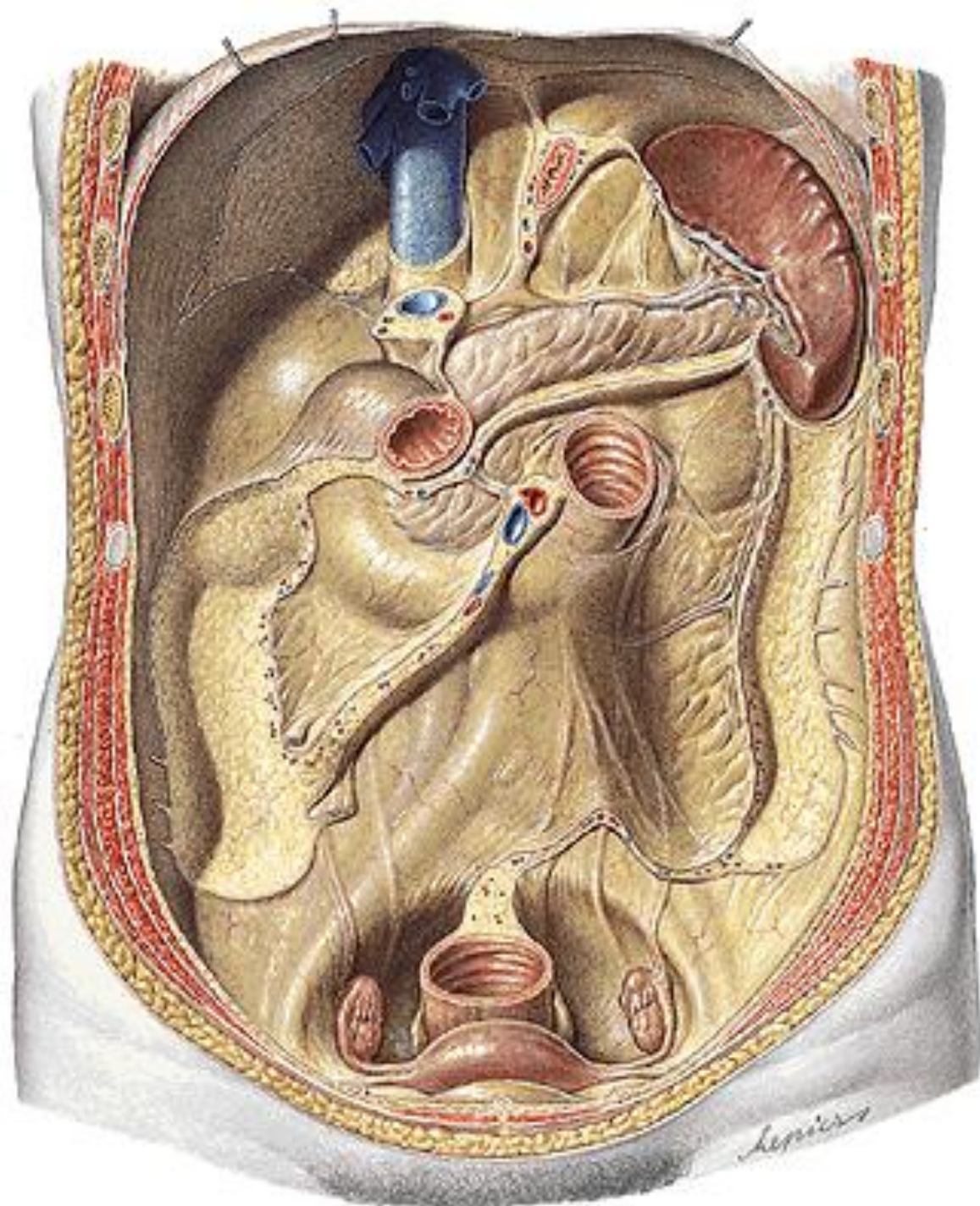
maag



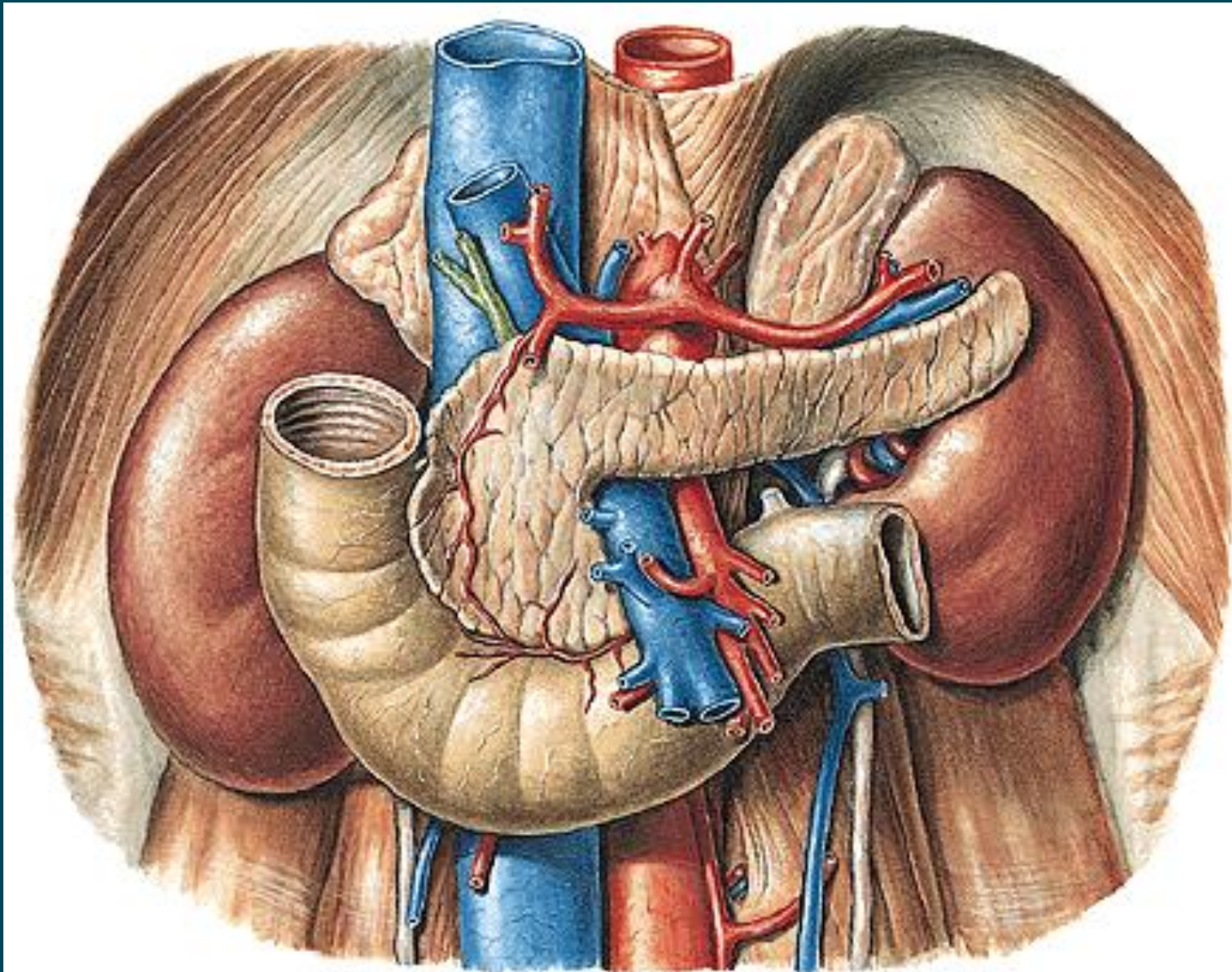
Liver



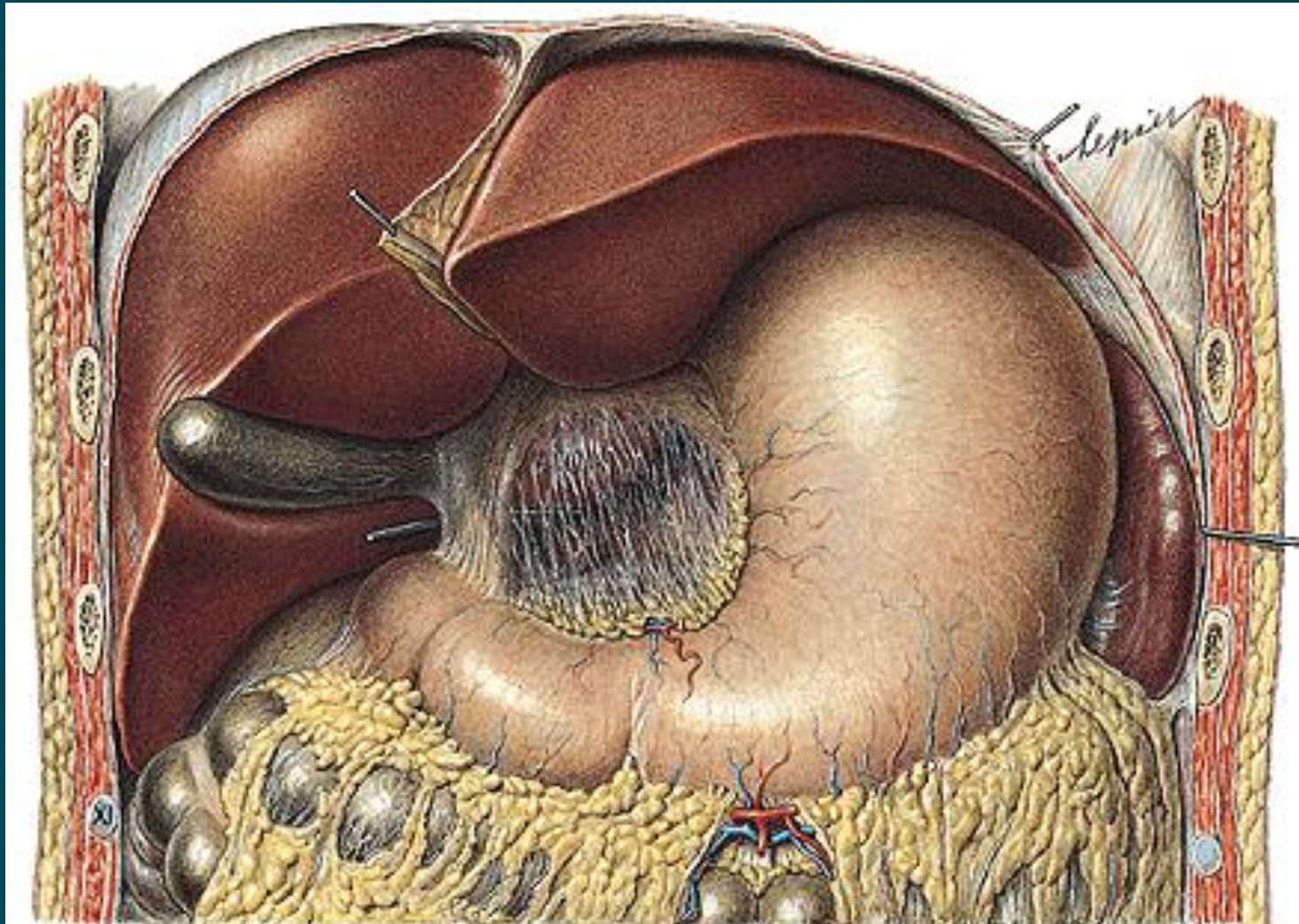
**Retro-
peritoneum**



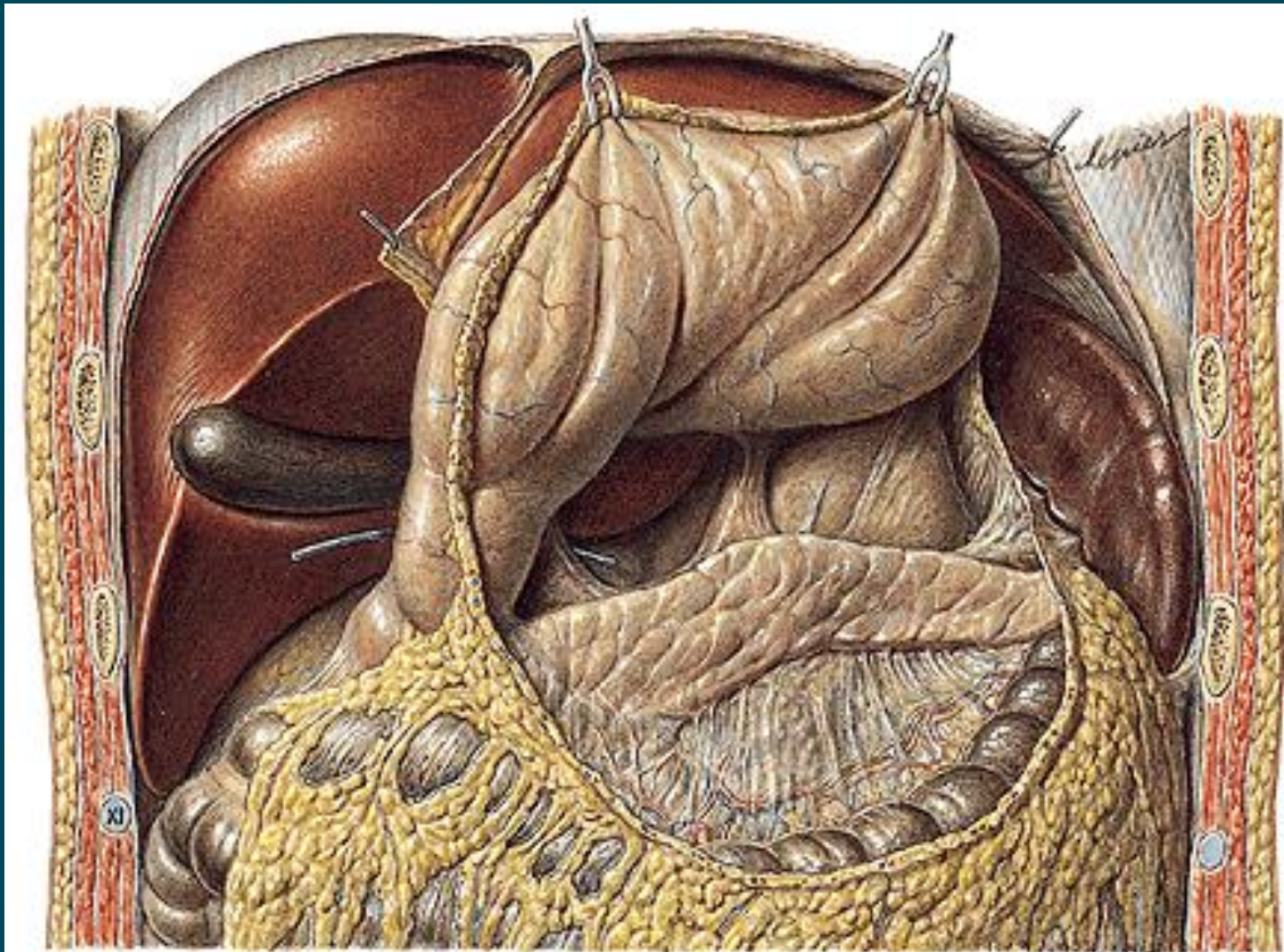
Pancreas en duodenum



milt



Pancreas and duodenum



Spleen

